

max

MUSIC

KB3 Electronic Keyboard 61-key Touch Function

Ref. nr.: 130.106



INSTRUCTION MANUAL

Congratulations to the purchase of this Max Music product. Please read this manual thoroughly prior to using the product in order to benefit fully from all features.

Read the manual prior to using the product. Follow the instructions in order not to invalidate the warranty. Take all precautions to avoid fire and/or electrical shock. Repairs must only be carried out by a qualified technician in order to avoid electrical shock. Keep the manual for future reference.

- Prior to using the product, please ask advice from a specialist. When the unit is switched on for the first time, some smell may occur. This is normal and will disappear after a while.
- The unit contains voltage carrying parts. Therefore do NOT open the housing.
- Do not place metal objects or pour liquids into the product. This may cause electrical shock and malfunction.
- Do not place the product near heat sources such as radiators, etc. Do not place the unit on a vibrating surface. Do not cover the ventilation holes.
- The product is not suitable for continuous use.
- Be careful with the mains lead and do not damage it. A faulty or damaged mains lead can cause electrical shock and malfunction.
- When unplugging the product from a mains outlet, always pull the plug, never the lead.
- Do not plug or unplug the unit with wet hands.
- If the plug and/or the mains lead are damaged, they need to be replaced by a qualified technician.
- If the product is damaged to such an extent that internal parts are visible, do NOT plug the unit into a mains outlet and DO NOT switch the product on. Contact your dealer. Do NOT connect the product to a rheostat or dimmer.
- To avoid fire and shock hazard, do not expose the product to rain and moisture.
- All repairs should be carried out by a qualified technician only.
- Connect the product to an earthed mains outlet (220-240Vac/50Hz) protected by a 10-16A fuse.
- During a thunderstorm or if the product will not be used for a longer period of time, unplug it from the mains. The rule is: Unplug it from the mains when not in use.
- If the product has not been used for a longer period of time, condensation may occur. Let the unit reach room temperature before you switch it on. Never use the product in humid rooms or outdoors.
- During operation, the housing may become hot.
- To prevent accidents in companies, you must follow the applicable guide lines and follow the instructions.
- Do not repeatedly switch the product on and off. This shortens the life time.
- Keep the unit out of the reach of children. Do not leave the unit unattended.
- Do not use cleaning sprays to clean switches. The residues of these sprays cause deposits of dust and grease. In case of malfunction, always seek advice from a specialist.
- Only operate the product with clean hands.
- Do not force the controls.
- If the product has fallen, always have it checked by a qualified technician before you switch the product on again.
- Do not use chemicals to clean the unit. They damage the varnish. Only clean the product with a dry cloth.
- Keep away from electronic equipment that may cause interference.
- Only use original spares for repairs, otherwise serious damage and/or dangerous radiation may occur.
- Switch the product off prior to unplugging it from the mains and/or other equipment. Unplug all leads and cables prior to moving the product.
- Make sure that the mains lead cannot be damaged when people walk on it. Check the mains lead before every use for damages and faults!
- The mains voltage is 220-240Vac/50Hz. Check if power outlet match. If you travel, make sure that the mains voltage of the country is suitable for this product.
- Keep the original packing material so that you can transport the product in safe conditions



This mark attracts the attention of the user to high voltages that are present inside the housing and that are of sufficient magnitude to cause a shock hazard.



This mark attracts the attention of the user to important instructions that are contained in the manual and that he should read and adhere to.

The product has been certified CE. It is prohibited to make any changes to the product. They would invalidate the CE certificate and their guarantee!

NOTE: To make sure that the unit will function normally, it must be used in rooms with a temperature between 5°C/41°F and 35°C/95°F.



Electric products must not be put into household waste. Please bring them to a recycling centre. Ask your local authorities or your dealer about the way to proceed. The specifications are typical. The actual values can slightly change from one unit to the other. Specifications can be changed without prior notice.

Do not attempt to make any repairs yourself. This would invalid your warranty. Do not make any changes to the product. This would also invalid your warranty. The warranty is not applicable in case of accidents or damages caused by inappropriate use or disrespect of the warnings contained in this manual. Max cannot be held responsible for personal injuries caused by a disrespect of the safety recommendations and warnings. This is also applicable to all damages in whatever form.

UNPACKING INSTRUCTION

CAUTION! Immediately upon receiving the product, carefully unpack the carton, check the contents to ensure that all parts are present and have been received in good condition. Notify the shipper immediately and retain packing material for inspection if any parts appear damaged from shipping or the package itself shows signs of mishandling. Save the package and all packing materials. If the product must be returned to the factory, it is important that the product is returned in the original factory box and packing.

If the device has been exposed to drastic temperature fluctuation (e.g. after transportation), do not switch it on immediately. The arising condensation water might damage your device. Leave the device switched off until it has reached room temperature.

Supplied contents:

- MAX Music KB3 keyboard
- Power supply
- Music sheet stand

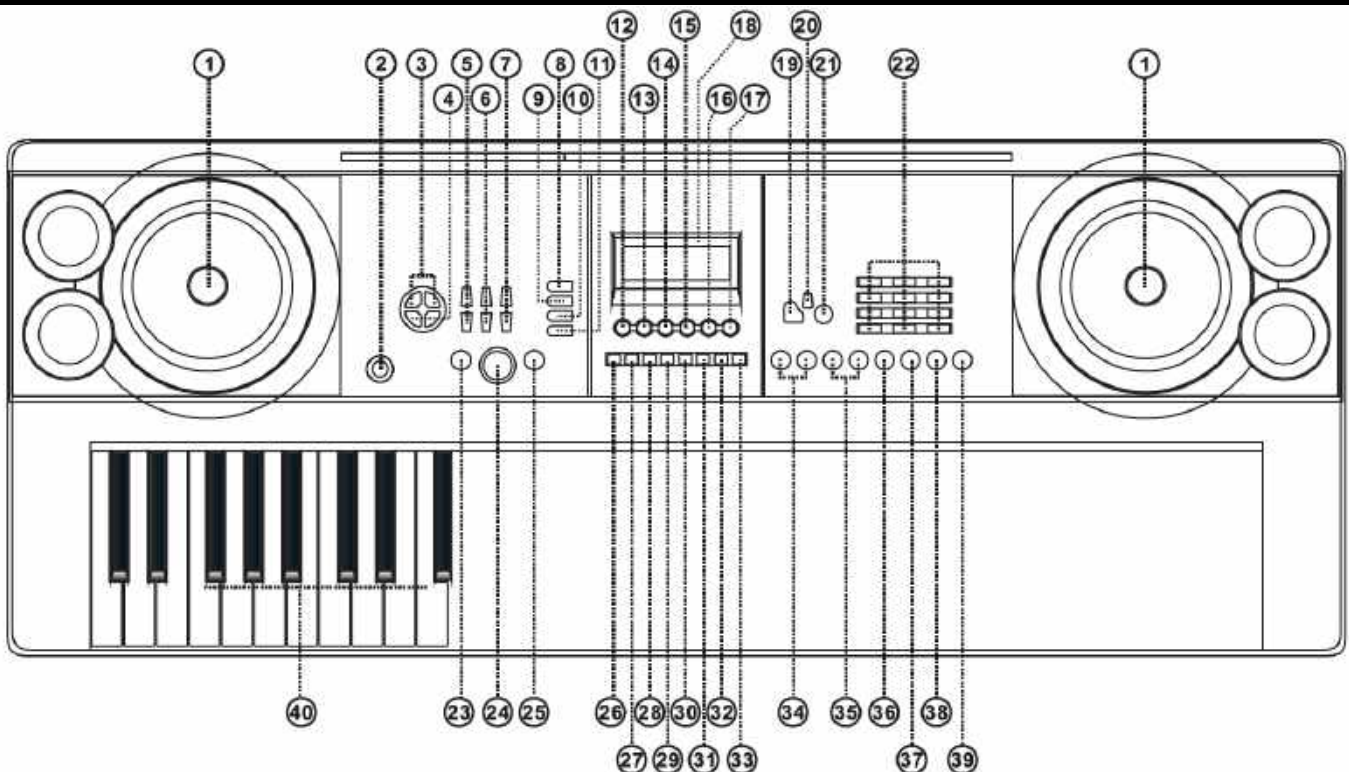
POWERSUPPLY

The label on the bottom of the product indicates to what type of power supply the product must be connected. Check that the mains voltage corresponds to this, all other voltages may cause irreparable damage. The product must also be directly connected to the mains, no dimmer or adjustable power supply.



Always connect the device to a protected circuit (circuit breaker or fuse). Make sure the device has an appropriate electrical ground to avoid the risk of electrocution or fire.

CONTROLS



- 1. SPEAKERS**
Loudspeakers to reproduce the sound of the music played. sound level is determined on the basis of the volume setting.
- 2. POWER ON/OFF**
Switch to turn the keyboard on or off.
- 3. MASTER VOLUME**
Press [Master Vol +] or [Master Vol -] to raise or lower the master volume. Press both simultaneously to reset to default value.
- 4. ACCOMP VOLUME**
Press [Accomp Vol +] or [Accomp Vol -] to raise or lower the accomp volume. Press both simultaneously to reset to default value.
- 5. TEMPO**
Press [Tempo +] or [Tempo -] to increase or decrease the rhythm speed. Pressing the two buttons simultaneously may reset to the default tempo.
- 6. TRANPOSE**
Press [Transpose +] or [Transpose -] to transpose the tone of the notes. The transpose may be adjusted from "-6" to "+6". Pressing the two buttons simultaneously resets transpose to the default value.

7. TUNE

Press [Tune +] or [Tune -] to accurately correct the pitch from “-99” to “+99”. Pressing the two buttons simultaneously resets pitch to the default value.

8. SINGLE CHORD

When rhythm is activated, press [Single]. After “SIN” shows on the display, you can play a single chord on the keys in the chord zone of the keyboard. Press [Single] again, “SIN” will disappear from the display. The single chord function will be disabled.

9. FINGERED CHORD

In this mode, you play the individual notes of the chord with your left hand. Under the state that the rhythm is activated, press [Fingered]. After the “FIN” shows on the display, you can play a fingered chord on the keys in the chord zone of the keyboard. Press [Fingered] again, “FIN” will disappear from the display. The fingered chord function will be disabled.

10. CHORD TIMBRE

Press [Chord Timbre] to change the tone (timbre) of the chord accompaniment. Press again to return to original timbre.

11. CHORD CLOSE

Press [Chord Close] to stop the chord.

12. METRONOME

There are 4 kinds of metronomes stored on the keyboard: 1/4 beat, 2/4 beat, 3/4 beat and 4/4 beat. Press [Metronome] once to set the rhythm at 1/4 beat, twice for 2/4 beat, etc. press for fifth time to cancel function.

13. ONE-KEY TRAINING

Press [One Key] to enable the single key training function, “LEARN” will show on the display. Press [SONG] and then the “+”/“-” buttons to select the song to be learned. One key training aims at duration learning, and there is no requirement on pitch or creativeness. This mode allows for mistakes when playing the keys, but the keyboard still plays correct notes and the display will show the correct notes. After one song is finished, repeat the current song to be learned. Press [Start/Stop] or press the [One Key] button to disable the training function.

14. FOLLOW TRAINING

Press [Follow] to enable the follow function, “LEARN” will show on the display. Press [SONG] and then the “+”/“-” buttons to select the song to be learned. With [Follow] training, you can learn by following the correct playing notes. You can also learn by following the notes shown on the display. The program will wait for you to play the correct note before it moves to the next one. Notes: In this mode, the Keyboard plays only the correct notes and gives no response to the wrong notes. Press [Start/Stop] or press [Follow] to disable the training function.

15. ENSEMBLE TRAINING

Press [Ensemble] to enable the ensemble function, “LEARN” will show on the display. Press [SONG] and then the “+”/“-” buttons to select the song to be learned. The Ensemble training aims at the correct and comprehensive learning of the song duration and notes. The keynote will be shielded for ensemble and you need to play the correct note according to the correct duration of the song. If you fail to play within 3 seconds, the keyboard will automatically play the correct note. After one song is finished, repeat the current song to be learned. Press the [Start/Stop] button or press [Ensemble] to disable the training function.

16. DEMO ONE

This keyboard has stored 20 demo songs (“000” to “019”) for your selection. Press [DEMO ONE] to play one demo song in repeat.

17. DEMO ALL

This keyboard has stored 20 demo songs (“000” to “019”) for your selection. Press [DEMO ALL] to play all available demo song in sequence.

18. LCD DISPLAY

Displays current mode, notes to play, rhythm, tempo, etc.

19. TIMBRE

The keyboard provides 200 timbres (“000” to “199”) to select. When turning on the keyboard, the timbre selection function will be turned on automatically. When in other modes, press the [TIMBRE] button to enable the function. “TONE” will show on the display if successful. The timbre is defaulted to be “000”, and it can be adjusted by pressing the corresponding number buttons or pressing the “+”/“-” button.

20. TOUCH

Press [TOUCH] to turn the touch function on or off. When turning the keyboard on, touch mode is default. The display shows “Touch”. This function can help to enrich musical expression and correctly reflect the force you apply on the keys. The larger the force, the louder the sound.

21. RHYTHM

Rhythm selection: This Keyboard provides 200 rhythms (“000” to “199”) for your selection. The rhythm is defaulted to be “000”. Press [Rhythm], “RHYM” will show on the display. Press the numeric keys or the “+”/“-” buttons to select other rhythms.

Rhythm enabling: Press [Start/Stop] to start accomp rhythm. While in enable state: Press [Sync], “SYN” will show on the display. Play any key in the chord key zone (1st-19th key from left). The accomp rhythm will be activated. Press [Start/Stop] to stop the accomp rhythm.

Interlude: After the accomp rhythm is activated, press [FILL-IN] to have a temporary rhythm play during the accomp rhythm.

22. NUM PAD

Numeric keys to enter an accurate value.

23. SYNC

When in rhythm mode, press [Sync]. “SYN” will show on the display. Play any key in the chord key zone (the 1st-19th key, from left) to activate the accomp rhythm.

24. START/STOP

Press to start or stop playing selected program.

25. FILL-IN

Press the [FILL-IN] button to add a fill to the accompaniment rhythm of your song. The fill played is determined by accompaniment rhythm selected. After the fill, the selected accompaniment rhythm will continue playing. The Fill In function can be used as often as desired.

26. RECORD

Press [Rec] to enable the recording function, "RECORD" will show on the display. In this mode all played notes will be recorded. Press [Play] to playback the recorded notes, "PLAY" will show on the display. When storage is full, "REC" will show on the display and recording will stop automatically.

27. PLAY

Press to playback recorded notes or rhythms.

28. PROGRAM

Press [Prog] to enable the rhythm programming function, "PROG" will show on the display and the keyboard percussion will be activated. In this mode, you can create custom rhythms by playing the corresponding percussion key. Programming will stop automatically when memory is full. Press [Play] to playback the programming rhythm. Press [Start/Stop] or press [Program] again to disable the programming function. All recorded rhythms will be removed.

29. NULL PLAY

Press [Null Play] to play the edited rhythm repeatedly. "Play" will show on the display.

30. SUSTAIN

Press [Sustain], "SUS" will show on the display. The sustain effect will be activated. Press this button again, "SUS" will disappear from the display. The sustain effect will be disabled.

31. VIBRATO

Press the [Vibrato] button, "VIB" will show on the display. The vibrato effect will be activated. Press this button again, "VIB" will disappear from the display. The vibrato effect will be disabled.

32. SPLIT

Press the [Split] button to divide the keyboard keys into two parts. "SPLIT" will appear on the display. The timbre of the two parts can be different, as the left part keeps the primary timbre but the right part can gain another timbre. Meanwhile, the pitch of the left part rises by 8 degrees while that of the right part falls by 8 degrees. Press the [Split] button again to stop the function. This function stops when auto-chord is enabled.

33. KEYBOARD PERCUSSION

This Keyboard provides several percussions. Press [Keyboard Percussion] to turn the keyboard into percussion keyboard, each key corresponds to one percussion instrument. Press this button again to disable the keyboard percussion function.

34. VOLUME CONTROL

Buttons to raise and lower MP3 volume.

35. PREVIOUS / NEXT

Buttons to select previous and next song.

36. PLAY / PAUSE

Press to start/resume or pause MP3 play.

37. STOP

Press to stop MP3 play.

38. CONTINUOUS / RANDOM / SINGLE PLAYBACK

Press to select a repeat mode.

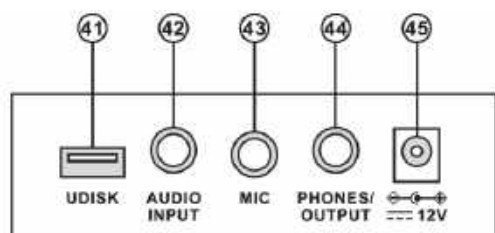
39. EFFECT

Press to select different effects.

40. CHORD ZONE

Chord key zone (1st-19th key from left).

CONNECTIONS



41. USB SLOT

Insert a USB flash disk into this port on the rear of the Keyboard for MP3 music playing. Supports 32G max.

42. AUDIO INPUT

Turn off the keyboard and external audio device of choice. Connect one end of the audio cable to the INPUT port on the rear panel of the keyboard, connect the other end to the audio port of the device.

43. MICROPHONE INPUT

Connect a microphone to the MIC port to sing while playing the keyboard.

44. HEADPHONES/OUTPUT

When connecting headphones to the PHONES/OUTPUT port, the loudspeaker will be disabled automatically. You can perform without disturbing others and other disturbing you.

45. DC 12V INPUT

Socket for plugging in the supplied power adapter.

AUTO RHYTHM

Rhythm selection

This Keyboard provides 200 rhythms ("000" to "199") for your selection. The rhythm is defaulted to be "000". Press [Rhythm], "RHYM" will show on the display. Press the numeric keys or the "+" / "-" buttons to select other rhythms.

Rhythm control

1. Rhythm enabling

Press [Start/Stop] to start accomp rhythm. While in enable state: Press [Sync], "SYN" will show on the display. Play any key in the chord key zone (1st-19th key from left). The accomp rhythm will be activated. Press [Start/Stop] to stop the accomp rhythm.

2. Interlude

After the accomp rhythm is activated, press [FILL-IN] to have a temporary rhythm play during the accomp rhythm.

3. Stop rhythm

Press [Start/Stop] to stop the accomp rhythm.

Tempo adjustment

Press [Tempo +] or [Tempo -] to increase or decrease the tempo. Pressing the two buttons simultaneously may reset to the default value tempo/min.

EFFECT CONTROL

Sustain function

Press [Sustain], "SUS" will show on the display. The sustain effect will be activated. Press this button again, "SUS" will disappear from the display. The sustain effect will be disenabled.

Vibrato function

Press the [Vibrato] button, "VIB" will show on the display. The vibrato effect will be activated. Press this button again, "VIB" will disappear from the display. The vibrato effect will be disenabled.

RECORDING AND RHYTHM PROGRAMMING

Recording

Press [Rec] to enable the recording function, "RECORD" will show on the display. In this mode all played notes will be recorded. Press [Play] to playback the recorded notes, "PLAY" will show on the display. When storage is full, "REC" will show on the display and recording will stop automatically.

Rhythm programming

Press [Prog] to enable the rhythm programming function, "PROG" will show on the display and the keyboard percussion will be activated. In this mode, you can create custom rhythms by playing the corresponding percussion key. Programming will stop automatically when memory is full. Press [Play] to playback the programming rhythm. Press [Start/Stop] or press [Program] again to disenable the programming function. All recorded rhythms will be removed.

TRAINING METHODS

Training I: One key

Press [One Key] to enable the single key training function, "LEARN" will show on the display. Press [SONG] and then the "+" / "-" buttons to select the song to be learned. One key training aims at duration learning, and there is no requirement on pitch or creativeness. This mode allows for mistakes when playing the keys, but the keyboard still plays correct notes and the display will show the correct notes. After one song is finished, repeat the current song to be learned. Press [Start/Stop] or press the [One Key] button to disenable the training function.

Training II: Follow

Press [Follow] to enable the follow function, "LEARN" will show on the display. Press [SONG] and then the "+" / "-" buttons to select the song to be learned. With [Follow] training, you can learn by following the correct playing notes. You can also learn by following the notes shown on the display. The program will wait for you to play the correct note before it moves to the next one. Notes: In this mode, the Keyboard plays only the correct notes and gives no response to the wrong notes. Press [Start/Stop] or press [Follow] to disenable the training function.

Training III: Ensemble

Press [Ensemble] to enable the ensemble function, "LEARN" will show on the display. Press [SONG] and then the "+" / "-" buttons to select the song to be learned. The Ensemble training aims at the correct and comprehensive learning of the song duration and notes. The keynote will be shielded for ensemble and you need to play the correct note according to the correct duration of the song. If you fail to play within 3 seconds, the keyboard will automatically play the correct note. After one song is finished, repeat the current song to be learned. Press the [Start/Stop] button or press [Ensemble] to disenable the training function.

RECOMMENDED TRAINING APPS / GAMES

MAX highly recommends the below apps to support you on your journey of piano exploration. It has never been this easy to dip your toes in the deep and majestic waters of playing the piano. Train yourself from novice to king of the keys with help from **PIANO DUST BUSTER**, **PIANO MAESTRO** and **SIMPLY PIANO**.

Please note: downloading the below apps is free of charge. Expanding the apps with more training, songs and other additives might involve costs.



PIANO DUST BUSTER

PIANO DUST BUSTER is the ultimate introduction to piano for kids. No previous piano experience needed!



PIANO MAESTRO

An in depth educational tool to study piano. From a single note to complete pieces, **PIANO MAESTRO** makes sheet music come to life!



SIMPLY PIANO

Explore the piano step-by-step, from scratch. **SIMPLY PIANO** will help you learn the basics from sight-reading to playing with both hands.

PIANO DUST BUSTER

Help granny dusting off her piano while collecting points and bonuses. Piano Dust Buster is a great tool to get excited about playing your piano and improving your skills. Piano Dust Buster is an ultimate introduction to piano, no previous piano experience needed. You have the option to begin practicing reading notation, compete against other players or challenge yourself to hundreds of songs ranging from Beethoven to Adele. (*IOS compatible only!)



PIANO MAESTRO

#1 ranked Education App. An in depth educational tool for beginning to study piano. PIANO MAESTRO helps practicing and learning sight reading, rhythm, technique, playing with both hands and much more!

In addition you will

Progress up in chapters, unlock new songs and raise the difficulty level along the way. Learn to play songs step by step and have access to practice options. You're able to personalize your learning experience.

Piano Method Books Included

Learn songs from some of the most well-known and beloved piano method books used today. A digital way to compliment the use of your favorite method book, all books can be found in the Library in the 'Methods' section. (*IOS-IPAD compatible only!)



SIMPLY PIANO (IOS and ANDROID COMPATIBLE)

Whether you're a complete beginner or want to learn piano on your own, SIMPLY PIANO will guide you to become the piano player you always wanted to be. Just place your IOS or Android device on your piano and play. Your device will immediately recognize what you are playing!

- Learn the piano basics from sight-reading to playing with both hands
- Tons of fun songs ranging from classical to top-charting hits
- Listens to how you play, giving you instant feedback to quickly learn and improve your skills
- Courses for different tastes and levels including pop chords, essentials, blues and more

(* Compatible with both IOS and ANDROID devices)



APPENDIX 1 TIMBRE TABLE

| | | | | | |
|-----|-------------------------|-----|------------------------|-----|---------------------|
| 000 | Acoustic Grand Piano | 067 | Baritone Sax | 134 | Muted Horn |
| 001 | Bright Acoustic Piano | 068 | Oboe | 135 | Wood Barafon 1 |
| 002 | Electric Grand Piano | 069 | English Horn | 136 | Multi Reed |
| 003 | Honky-tonk Piano | 070 | Bassoon | 137 | Guitar Pinch 1 |
| 004 | Rhodes Piano | 071 | Clarinet | 138 | Multi Wind |
| 005 | Chorused Piano | 072 | Piccolo | 139 | Mellow Fm |
| 006 | Harpsichord | 073 | Flute | 140 | Pi Pa 2 |
| 007 | Clavichord | 074 | Recorder | 141 | Upright Piano |
| 008 | Celesta | 075 | Pan Flute | 142 | Hard Vibe 1 |
| 009 | Glockenspiel | 076 | Bottle Blow | 143 | Wood Barafon 2 |
| 010 | Music Box | 077 | Shakuhachi | 144 | Santur |
| 011 | Vibraphone | 078 | Whistle | 145 | Reed Organ 2 |
| 012 | Marimba | 079 | Ocarina | 146 | Puff Harmonica |
| 013 | Xylophone | 080 | Lead 1 (square) | 147 | Ukulele |
| 014 | Tubular Bell 1 | 081 | Lead 2 (sawtooth) | 148 | 12-str. Gt |
| 015 | Dulcimer | 082 | Lead 3 (calliope lead) | 149 | Guitar Pinch 2 |
| 016 | Drawbar Organ | 083 | Lead 4 (chiff lead) | 150 | Slow Violin |
| 017 | Percussive Organ | 084 | Lead 5 (charang) | 151 | Bright String |
| 018 | Rock Organ | 085 | Lead 6 (voice) | 152 | Indian Flute 1 |
| 019 | Church Organ | 086 | Lead 7 (fifths) | 153 | Church Bells |
| 020 | Reed Organ 1 | 087 | Lead 8 (bass+lead) | 154 | Soft Sax |
| 021 | Accordion | 088 | Pad 1 (new age) | 155 | Soft Clav. |
| 022 | Harmonica | 089 | Pad 2 (warm) | 156 | Grow Guitar |
| 023 | Tango Accordion | 090 | Pad 3 (polysynth) | 157 | Steel Bell |
| 024 | Acoustic Guitar (nylon) | 091 | Pad 4 (choir) | 158 | Tenor Sax 2 |
| 025 | Acoustic Guitar (steel) | 092 | Pad 5 (bowed) | 159 | Didgeridoo |
| 026 | Electric Guitar (jazz) | 093 | Pad 6 (metallic) | 160 | Attack Barafon |
| 027 | Electric Guitar (clean) | 094 | Pad 7 (halo) | 161 | Synth Harpsi. 1 |
| 028 | Electric Guitar (muted) | 095 | Pad 8 (sweep) | 162 | Mute Barafon 1 |
| 029 | Overdriven Guitar | 096 | FX 1 (rain) | 163 | Nay |
| 030 | Distortion Guitar | 097 | FX 2 (soundtrack) | 164 | Attack Clav. 1 |
| 031 | Guitar Harmonics | 098 | FX 3 (crystal) | 165 | Crystal 1 |
| 032 | Acoustic Bass | 099 | FX 4 (atmosphere) | 166 | Soft Santur |
| 033 | Electric Bass (finger) | 100 | FX 5 (brightness) | 167 | Dual Horns |
| 034 | Electric Bass (pick) | 101 | FX 6 (goblins) | 168 | Barafon 1 |
| 035 | Fretless Bass | 102 | FX 7 (echoes) | 169 | Hard Barsoon 1 |
| 036 | Slap Bass 1 | 103 | FX 8 (sci-fi) | 170 | Organ Flute |
| 037 | Slap Bass 2 | 104 | Sitar | 171 | Tron Flute |
| 038 | Synth Bass 1 | 105 | Banjo | 172 | Kawala 1 |
| 039 | Synth Bass 2 | 106 | Shamisen | 173 | Jazz Organ |
| 040 | Violin | 107 | Koto | 174 | Reed Horn |
| 041 | Viola | 108 | Kalimba | 175 | Soft Accord |
| 042 | Cello | 109 | Bagpipe | 176 | Hard Vibe 2 |
| 043 | Contrabass | 110 | Fiddle | 177 | Wind Organ |
| 044 | Tremolo Strings | 111 | Shanai | 178 | Twin Bones |
| 045 | Pizzicato Strings | 112 | Tinkle Bell | 179 | Synth Harpsi. 2 |
| 046 | Orchestral Harp | 113 | Agogo | 180 | Viola Attack |
| 047 | Timpani | 114 | Steel Drums | 181 | Bari & Tenor |
| 048 | String Ensemble 1 | 115 | Woodblock | 182 | Attack Clav. 2 |
| 049 | String Ensemble 2 | 116 | Taiko Drum | 183 | Chorus Guitar. |
| 050 | Synth Strings 1 | 117 | Melodic Tom | 184 | Attack Harp 1 |
| 051 | Synth Strings 2 | 118 | Synth Drum | 185 | Tsugaru |
| 052 | Choir Aahs | 119 | Reverse Cymbal | 186 | Oct Harp |
| 053 | Voice Oohs | 120 | Guitar Fret Noise | 187 | Hard Barsoon 2 |
| 054 | Synth Voice | 121 | Breath Noise | 188 | Tubular Bell 2 |
| 055 | Orchestra Hit | 122 | Seashore | 189 | Kawala 2 |
| 056 | Trumpet | 123 | Bird Tweet | 190 | Suona |
| 057 | Trombone | 124 | Telephone Ring | 191 | Attack Harp 2 |
| 058 | Tuba | 125 | Helicopter | 192 | Mute Barafon 2 |
| 059 | Muted Trumpet | 126 | Applause | 193 | Electric Vibraphone |
| 060 | French Horn | 127 | Gunshot | 194 | Kawala 3 |
| 061 | Brass Section | 128 | Jungle Bass | 195 | Mute Barafon 3 |
| 062 | Synth Brass 1 | 129 | Pi Pa 1 | 196 | Indian Flute 2 |
| 063 | Synth Brass 2 | 130 | Feedback Gt. | 197 | Guitar Pinch 3 |
| 064 | Soprano Sax | 131 | Uilleann Harp | 198 | Crystal 2 |
| 065 | Alto Sax | 132 | Jazz Bass | 199 | Barafon 2 |
| 066 | Tenor Sax 1 | 133 | Flugel Horn | | |

APPENDIX 2 RHYTHM TABLE

| | | | | | |
|-----|-------------------|-----|----------------------|-----|-------------------|
| 000 | 8 Beat Pop 1 | 067 | Big Band Swing | 134 | Disco Funk |
| 001 | 8 Beat Pop 2 | 068 | Big Band Balld | 135 | Pop Mambo |
| 002 | 8 Bt Uptempo | 069 | Jazz Quartet | 136 | Europe Swing |
| 003 | 8 Bt Standard | 070 | Dixieland | 137 | Tricks Latin |
| 004 | 8 Beat Medium | 071 | Cool Jazz | 138 | Disco Samba |
| 005 | 8 Beat Ballad | 072 | Jazz Ballad | 139 | Latin Waltz |
| 006 | Epic Ballad | 073 | BB Quick Step | 140 | Dance Pop 3 |
| 007 | Piano Ballad | 074 | Bluegrass 1 | 141 | Jazz Rock |
| 008 | 16 Beat Pop | 075 | Bluegrass 2 | 142 | Detroit |
| 009 | 16 Bt Shuffle 1 | 076 | Country 2-4 | 143 | Fanatical Sand |
| 010 | 16 Bt Shuffle 2 | 077 | 8 Bt Country | 144 | European Rock |
| 011 | 16 Bt Ballad 1 | 078 | Country Rock | 145 | Ground Beat |
| 012 | 16 Bt Ballad 2 | 079 | Cwby Boogie | 146 | 8 Beat Modern |
| 013 | 16 Bt Ballad 3 | 080 | Cntry Ballad | 147 | Jazz Disco |
| 014 | Funk 1 | 081 | Cntry Shuffle | 148 | Dixie Jazz |
| 015 | Funk 2 | 082 | Country Waltz 1 | 149 | Disco Chocolate |
| 016 | Soul | 083 | Jazz Waltz 1 | 150 | Disco Latin |
| 017 | China 1 | 084 | Hully Gully | 151 | Synth Boogie |
| 018 | China 2 | 085 | March 1 | 152 | Saturday Night |
| 019 | China 3 | 086 | March 2 | 153 | Club Dance 1 |
| 020 | China 4 | 087 | 6-8 March | 154 | Tricks Bossanova |
| 021 | China 5 | 088 | Polka | 155 | Tarantella 2 |
| 022 | China 6 | 089 | Pop Waltz | 156 | USA March |
| 023 | China 7 | 090 | Cha Cha | 157 | Espagnol 2 |
| 024 | China 8 | 091 | Rumba 1 | 158 | Club Latin |
| 025 | China 9 | 092 | Pasodoble | 159 | Jazz Cha Cha |
| 026 | China 10 | 093 | Tango Cont | 160 | Country Cha Cha |
| 027 | Folk Rock | 094 | Foxtrot | 161 | Disco Party |
| 028 | Pop Rock 1 | 095 | Jive | 162 | Modern R&B 1 |
| 029 | Pop Rock 2 | 096 | Stndrd Waltz | 163 | 8 Beat Pop 3 |
| 030 | 8 Bt Rock Balld | 097 | German Waltz | 164 | Country Jazz |
| 031 | 16 Bt Rock Bld | 098 | Vienn Waltz | 165 | Soul Rock |
| 032 | Hard Rock | 099 | Musette Waltz | 166 | Rumba 2 |
| 033 | Rock Shuffle | 100 | 8 Beat Soul | 167 | Samba 2 |
| 034 | 6-8 Hvy Rock | 101 | Classical 8 Beat | 168 | Modern R&B 2 |
| 035 | US-Rock | 102 | Jazz Latin | 169 | Club Dance 2 |
| 036 | 16 Beat Rock | 103 | Unplugged | 170 | Country Bossanova |
| 037 | Rock & Roll 1 | 104 | Boogie | 171 | Jazz Bo |
| 038 | Rock & Roll 2 | 105 | Cumbia | 172 | Modern Cha Cha |
| 039 | 60's RockN | 106 | Classical Slow Rock | 173 | Pop Reggae 2 |
| 040 | Bossa Nova 1 | 107 | European Disco | 174 | Rock Samba |
| 041 | Bossa Nova 2 | 108 | Big Band Middle | 175 | Jazz 8 Beat 1 |
| 042 | Bossa Nova 3 | 109 | Chrliston | 176 | Disco |
| 043 | Salsa | 110 | Pasodobl | 177 | Seville |
| 044 | Samba 1 | 111 | Cat Groove 1 | 178 | Disco Hands |
| 045 | Mambo | 112 | Jazz Tango | 179 | Rock Ballad |
| 046 | Beguine | 113 | Fast Gospe | 180 | Mixed Bossanova |
| 047 | Merengue | 114 | Big Band Fast 1 | 181 | Jazz 16 Beat |
| 048 | Bolero Lento | 115 | Tricks Mambo | 182 | Jazz Waltz 2 |
| 049 | Espagnole | 116 | Funky Disco | 183 | Love Song |
| 050 | Cajun | 117 | Latin Salsa | 184 | Hip Waltz |
| 051 | Reggae 12 | 118 | Pop New Age | 185 | Disco Fox |
| 052 | Pop Reggae 1 | 119 | Jazz Swing | 186 | Pop Rock 3 |
| 053 | Soul Ballad | 120 | Trip Hop | 187 | Tijuana Waltz |
| 054 | Slow Rock 1 | 121 | Rave | 188 | Uk Pop |
| 055 | Slow Rock 2 | 122 | Acoustic Ballad | 189 | Show Tune |
| 056 | 6-8 Ballad | 123 | India's Indigenous | 190 | Schlager Alp |
| 057 | R&B | 124 | Indonesian Pop | 191 | Single Rock |
| 058 | 70's Chart Ballad | 125 | Pop Ballad | 192 | Swing Waltz |
| 059 | Romantic Ballad | 126 | South Africa Country | 193 | Slow Waltz |
| 060 | Dance Pop 1 | 127 | Country Waltz 2 | 194 | Cat Groove 2 |
| 061 | Dance Pop 2 | 128 | Tarantella 1 | 195 | Country Slow Rock |
| 062 | Techno | 129 | Bright Pop | 196 | Rock Disco |
| 063 | Euro Beat | 130 | Pub Piano | 197 | 16 Beat Shuffle |
| 064 | Euro House | 131 | West Shuffle | 198 | Jazz 8 Beat 2 |
| 065 | Hip Hop | 132 | Big Band Fast 2 | 199 | Casa |
| 066 | Swing | 133 | Espagnol 1 | | |

TECHNICAL SPECIFICATION

Power Supply : 100-240VAC 50/60Hz (12V Adapter)
Weight : 4,20 kg
Dimensions : 965 x 368 x 157mm

The specifications are typical. The actual values can slightly change from one unit to the other. Specifications can be changed without prior notice.

The products referred to in this manual conform to the European Community Directives to which they are subject:

European Union

Tronios B.V.,
Bedrijvenpark Twente Noord 18,
7602KR Almelo, The Netherlands

2014/35/EU

2014/30/EU

2011/65/EC



United Kingdom

Tronios Ltd.,
130 Harley Street,
London W1G 7JU, United Kingdom

S.I. 2016:1101

S.I. 2016:1091

S.I. 2012:3032



Specifications and design are subject to change without prior notice.

www.tronios.com

Copyright © 2022 by Tronios The Netherlands

KEYNOTE STICKERS

Suitable for your electronic keyboard



Instructions

visit www.tronios.com

INSTRUCTIONS / INSTRUCTIES / ANWEISUNGEN / INSTRUCCIONES / INSTRUCTIONS

ENGLISH

White key stickers:

Locate the numbers at the bottom of each sticker. Stick the #1 sticker on the leftmost white key of the keyboard. Place additional stickers moving from left to right, keeping the numbers in sequential order from 1 to 36 (for 61-key keyboard), 1 to 32 (for 54-keys keyboard) or 1 to 29 (for 49-keys keyboard).

Black key stickers:

Locate the numbers at the bottom of each sticker. Stick the #1 sticker on the leftmost black key of the keyboard. Place additional stickers moving from left to right, keeping the numbers in sequential order from 1 to 25 (for 61 keys keyboard), 1 to 22 (for 54-keys keyboard) or 1 to 20 (for 49-keys keyboard).

NEDERLANDS

Witte toetsstickers:

Zoek de nummers aan de onderkant van elke sticker. Plak de eerste sticker op de meest linkse witte toets van het keyboard. Plak de overige stickers van links naar rechts en houd daarbij de volgorde aan van 1 tot 36 (voor een toetsenbord met 61 toetsen), 1 tot 32 (voor een toetsenbord met 54 toetsen) of 1 tot 29 (voor een toetsenbord met 49 toetsen).

Zwarte toetsstickers:

Zoek de nummers aan de onderkant van elke sticker. Plak de eerste sticker op de meest linkse zwarte toets van het keyboard. Plak de overige stickers van links naar rechts, in de volgorde 1 tot 25 (voor een toetsenbord met 61 toetsen), 1 tot 22 (voor een toetsenbord met 54 toetsen) of 1 tot 20 (voor een toetsenbord met 49 toetsen).

DEUTSCH

Weißer Tastenaufkleber:

Suchen Sie die Zahlen auf der Unterseite jedes Aufklebers. Kleben Sie den Aufkleber mit der Nummer 1 auf die ganz linke weiße Taste der Tastatur. Bringen Sie weitere Aufkleber von links nach rechts an, wobei Sie die Zahlen in der Reihenfolge von 1 bis 36 (bei einer Tastatur mit 61 Tasten), 1 bis 32 (bei einer Tastatur mit 54 Tasten) oder 1 bis 29 (bei einer Tastatur mit 49 Tasten).

Schwarze Tastenaufkleber:

Suchen Sie die Zahlen auf der Unterseite jedes Aufklebers. Kleben Sie den Aufkleber mit der Nummer 1 auf die ganz linke schwarze Taste der Tastatur. Bringen Sie weitere Aufkleber von links nach rechts an, wobei Sie die Zahlen in der Reihenfolge von 1 bis 25 (bei einer Tastatur mit 61 Tasten), 1 bis 22 (bei einer Tastatur mit 54 Tasten) oder 1 bis 20 (bei einer Tastatur mit 49 Tasten) anordnen.

ESPAÑOL

Pegatinas de teclas blancas:

Localiza los números en la parte inferior de cada pegatina. Pegue la pegatina nº 1 en la tecla blanca más a la izquierda del teclado. Coloque las pegatinas adicionales moviéndose de izquierda a derecha, manteniendo los números en orden secuencial del 1 al 36 (para el teclado de 61 teclas), del 1 al 32 (para el teclado de 54 teclas) o del 1 al 29 (para el teclado de 49 teclas).

Pegatinas de teclas negras:

Localice los números en la parte inferior de cada pegatina. Pegue la pegatina nº 1 en la tecla negra más a la izquierda del teclado. Coloque las pegatinas adicionales moviéndose de izquierda a derecha, manteniendo los números en orden secuencial del 1 al 25 (para el teclado de 61 teclas), del 1 al 22 (para el teclado de 54 teclas) o del 1 al 20 (para el teclado de 49 teclas).

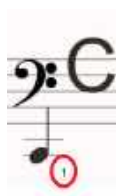
Français

Autocollants pour les touches blanches :

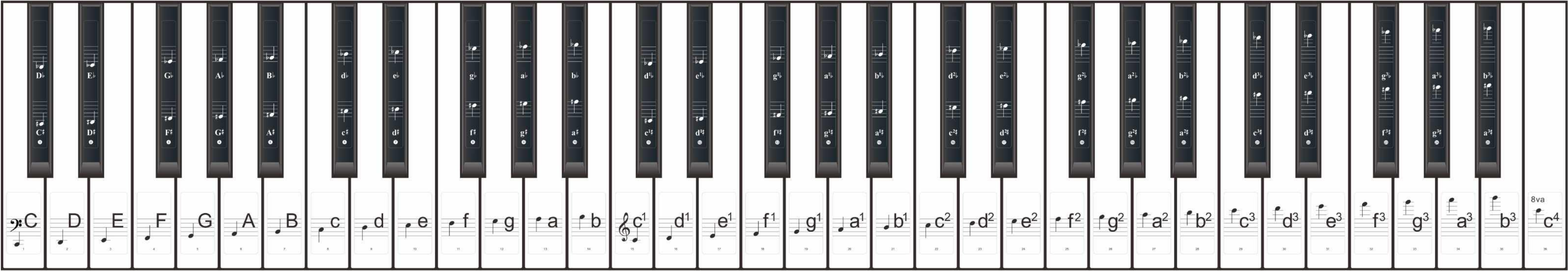
Repérez les numéros au bas de chaque autocollant. Collez l'autocollant n° 1 sur la touche blanche la plus à gauche du clavier. Placez les autres autocollants de gauche à droite, en respectant l'ordre séquentiel des numéros de 1 à 36 (pour un clavier de 61 touches), de 1 à 32 (pour un clavier de 54 touches) ou de 1 à 29 (pour un clavier de 49 touches).

Autocollants pour les touches noires :

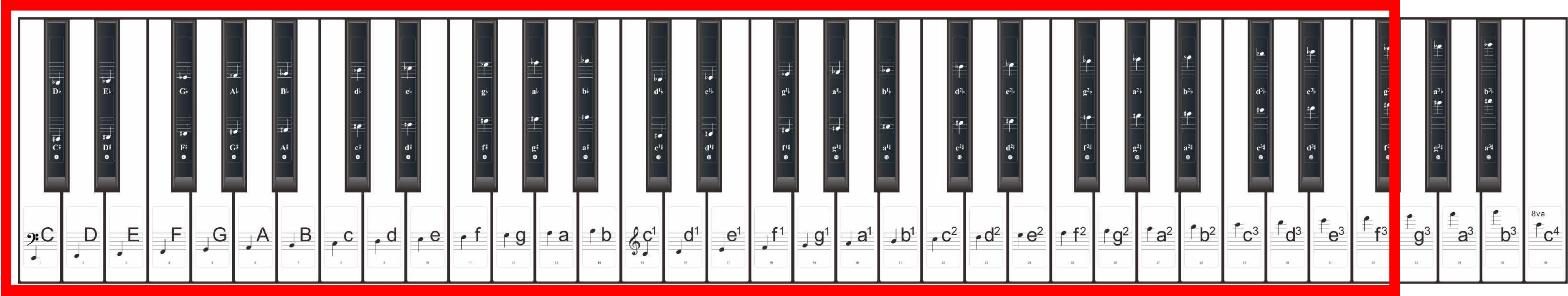
Repérez les numéros au bas de chaque autocollant. Collez l'autocollant n° 1 sur la touche noire la plus à gauche du clavier. Placez les autres autocollants de gauche à droite, en respectant l'ordre séquentiel des numéros de 1 à 25 (pour un clavier de 61 touches), de 1 à 22 (pour un clavier de 54 touches) ou de 1 à 20 (pour un clavier de 49 touches).



61 KEY



54 KEY



49 KEY

